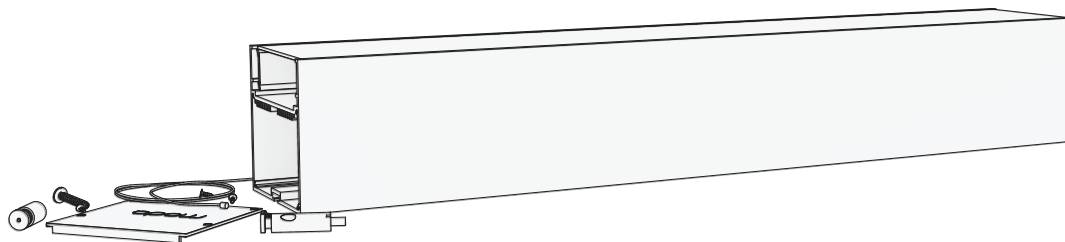


modaLIGHT®

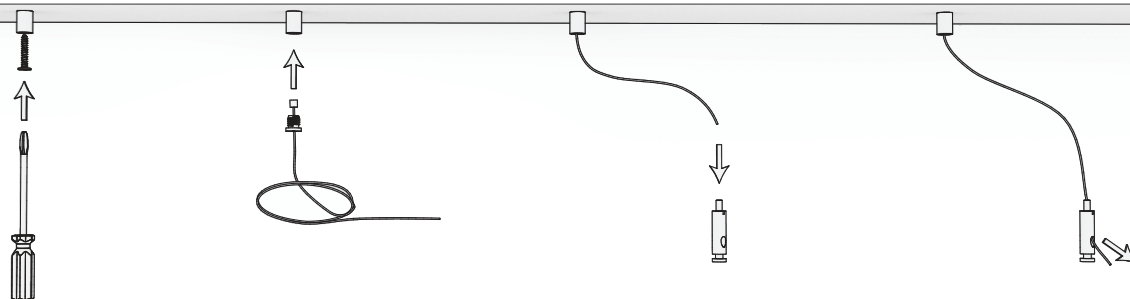
INSTALLATION

• ROBUS

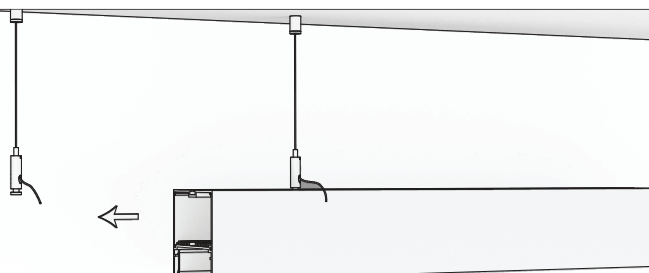
1



2

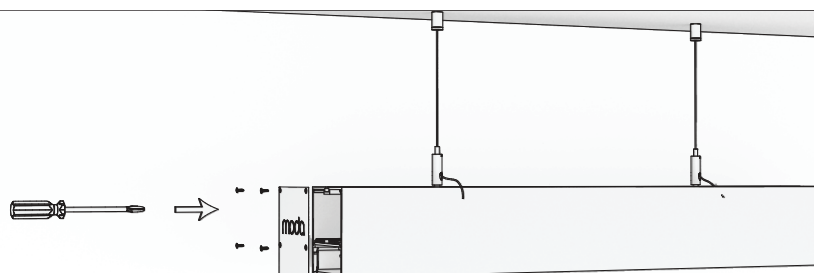


3



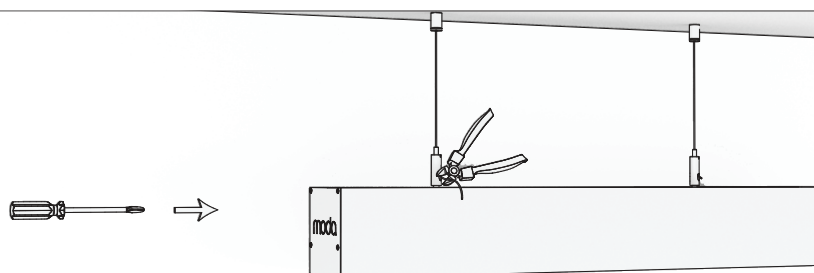
Slide ROBUS XTRUSION® onto mounted suspension system

4



Screw endcap onto ROBUS XTRUSION®

5



Trim excess cable from suspension system after confirming height of ROBUS XTRUSION®

All MODA LIGHT products should be installed by a Licensed Electrician to local & national code. Do not modify any MODA LIGHT components, plugs or accessories. Any modifications will void the warranty and may create a potential safety hazard. Do not put on the same circuit as inductive loads. Incorrect wiring will result in irreparable permanent damage to the LEDs and fixture. MODA LIGHT tests all products before shipping, and will not replace items that have been destroyed by incorrect wiring or handling. Ensure electrical circuit is switched off before wiring. See MODA LIGHT terms and conditions for product limited warranty.