

Project Name: \_\_\_\_\_ SKU: \_\_\_\_\_

MODA Contact: \_\_\_\_\_ E-Mail: \_\_\_\_\_

Type: \_\_\_\_\_ PO#: \_\_\_\_\_ Quantity: \_\_\_\_\_

Notes: \_\_\_\_\_

### OVERVIEW

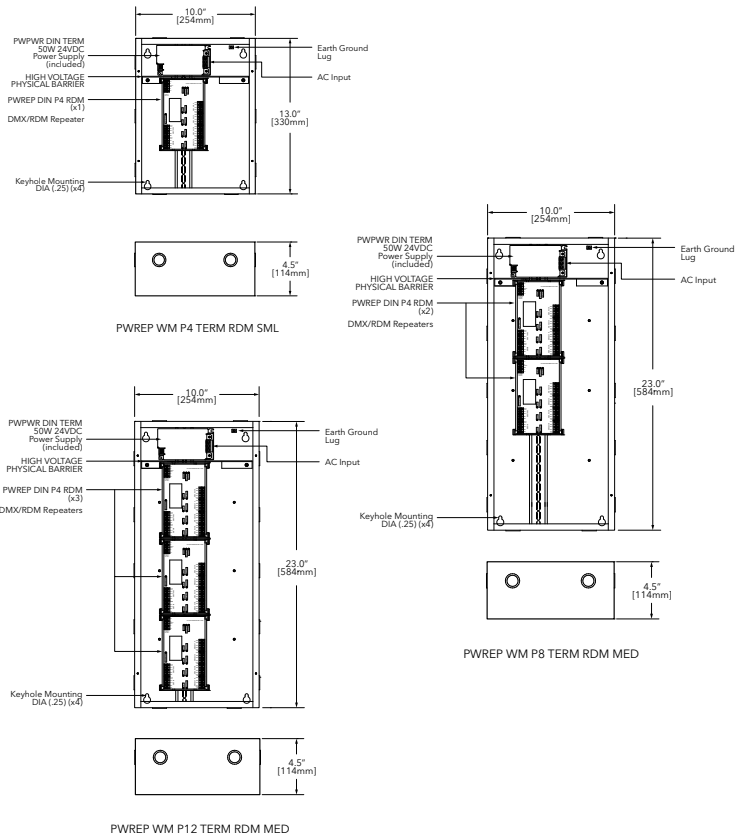
- This series of E1.20 RDM Compliant opto-splitters are an essential component of DMX distribution systems, permitting star-wiring configurations while isolating and protecting equipment from electrical faults.
- Available in 4, 8 or 12 Ports, they support the bi-directional communication standard E1.20 Remote Device Management (RDM).
- The Pathway Wall-mount DMX Repeaters are robust NEMA1 enclosures complete with a power supply and conduit knockouts for fast, easy installation.

### FEATURES

- Internally pre-configured and pre-wired, ready for installation
- 3 models - 4, 8, or 12 Outputs
- 3 inputs [RDM-Enabled models] or daisy-chain a single source
- Removable terminal connectors, with both compression-screw terminal and insulation-displacement contact (IDC) connectors supplied
- No fuses - self-resetting port protection recovers from voltage faults
- 120-277V AC, 50/60Hz power supply
- RDM-compliant non-isolated 5th output port
- LED Indicators for Port Activity, Power, DMX Input, and Iso Power

### SPECIFICATIONS

<b>Dimensions</b>	H: (Small) 13in (330mm); (Medium) 23in (584mm) W: (Both) 10in (254mm) D: (Both) 4 1/2in (114mm)
<b>Weight</b>	4 Port (Small): 9.4lbs (4 1/4kg) 8 Port (Medium): 13.8lbs (6 1/4kg) 12 Port (Medium): 14.3lbs (6 1/2kg)
<b>Construction Material</b>	Steel
<b>Operating Temp Range</b>	14°F ~ 113°F (-10°C ~ 45°C)
<b>Ingress Protection</b>	Dry Location - IP20
<b>Relative Humidity</b>	5-95%, non-condensing
<b>ELECTRICAL</b>	
<b>Input Voltage</b>	120 - 277V AC
<b>Input Frequency</b>	50 - 60Hz
<b>Isolation &amp; Fault Protection - RDM</b>	3000V isolation between DMX Ports (1500V isolation from any DMX Port and DMX Thru) 250V fault protection on DMX Ports



### STANDARDS & CERTIFICATIONS



<b>Certification</b>	ETL Compliant
<b>Compliance</b>	ANSI E1.11 DMX512-A R2013 ANSI E1.20 RDM - Remote Device Management
<b>Warranty</b>	3 Year Limited Warranty

Ports	Description	Enclosure	Ordering SKU
4 DMX Port (Small)	Wall-mount, 4 ports, E1.20 RDM Compliant	10" x 13" x 4.5" DIN	250-0153
8 DMX Port (Medium)	Wall-mount, 8 ports, E1.20 RDM Compliant	10" x 23" x 4.5" DIN	250-0154
12 DMX Port (Medium)	Wall-mount, 12 ports, E1.20 RDM Compliant	10" x 23" x 4.5" DIN	250-0155