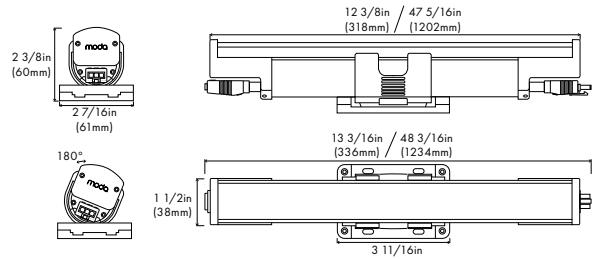
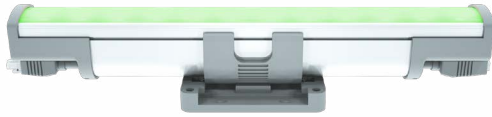


Project Name: _____ SKU: _____

MODA Contact: _____ E-Mail: _____

Type: _____ PO#: _____ Quantity: _____

Notes: _____



PHYSICAL

Dimensions	L: 12 3/8in (316mm) L: 47 5/16in (1202mm)	W: 2 7/16in (61mm) H: 2 3/8in (60mm)
Weight	12in: 1lbs (0.45kg) 48in: 3.3lbs (1.5kg)	
Applications	Graze, Accent, & Indirect General Illumination	
Construction	Pure Aluminum Body, Polycarbonate Mounting Bracket and Polycarbonate Optical Lens	
Ingress Protection	Dry/Damp Location IP44	
Thermal Management	Moda Aluminum Heat Sink	
Fixture Connections	Integral Male & Female Connectors	
Operating Temperature	-40°F ~ 122°F (-40°C ~ 50°C)	
Storage Temperature	-40°F ~ 176°F (-40°C ~ 80°C)	
Humidity	0-95% Non Condensing	

**OUTPUT
CCT & SDCM**

Colors	N/A
Colors	Yellow, Pink, Cyan, Violet, Turquoise, Ice Blue, Light Green, Golden Yellow available
Beam Angle	6°, 10°, 25°, 40°, 10°x40°, 30°x60°, Forward Throw Asymmetric, or 30°x100° optic options
Color Bin Tolerance	Single Bin
CRI	N/A
Lumen Maintenance	90,000 Hours L70 @ 25°C 70,000 Hours L70 @ 50°C
Testing Data	Light Data LM-79-08 & LM-80-08
Dimming Range	100%-0% flicker-free

SPECIFICATIONS

	Lumens		Efficacy	
	1FT	4FT	1FT	4FT
HO	592 - 1098	2068 - 3950	59 - 109	51 - 99
HO+	288 - 1104	958 - 4420	28 - 110	24 - 110

POWER CONSUMPTION

	120V - 277V AC	
	1FT	4FT
HO	10W	40W
HO+	10W	40W

ELECTRICAL

Input Voltage	100-277V AC 50Hz/60Hz
Control	Electronic Low Voltage Reverse Phase Trailing Edge
Power Factor	≥ 0.98

MAX CONTINUOUS RUN

	120V AC	277V AC
HO	60ft	120ft
HO+	60ft	120ft

STANDARDS & CERTIFICATIONS



Certification	Tested to UL & CSA by Intertek For Use in USA & CANADA. Exceeds ANSI C78.377-2015, CE, CCC, C-Tick, RoHS, & WEEE Compliant.
Class	1
Warranty	5 Year Limited Warranty

1FT		30°x100°	
Output	CCT	Lumens	Efficacy
HO+	Cyan	1104.00	110.40
	Ice Blue	648.00	64.80
	Light Green	912.00	91.20
	Yellow	360.00	36.00

1FT		30°x100°	
Output	CCT	Lumens	Efficacy
HO+	Golden Yellow	792.00	79.20
	Turquoise	288.00	28.80
	Pink	362.00	36.20
	Violet	312.00	31.20

4FT		30°x100°	
Output	CCT	Lumens	Efficacy
HO+	Cyan	4420.00	110.50
	Ice Blue	2587.00	64.67
	Light Green	3644.00	91.10
	Yellow	1435.00	35.87

4FT		30°x100°	
Output	CCT	Lumens	Efficacy
HO+	Golden Yellow	3164.00	79.10
	Turquoise	1151.00	28.77
	Pink	1447.00	36.17
	Violet	1242.00	31.05

BEAM ANGLE

	HO	HO+
6° / 10° / 25° / 40° / 10°x40° / 30°x60° Forward Throw Asymmetric	•	
30°x100°		•
	• Available	



COMPLETE SKU SAMPLE: MGI-HOP-S1-S-IB-1-310

A - FIXTURE & LOCATION

MGI — Moda Graze Interior

B - LIGHT OUTPUT

HO — High Output
HOP — High Output Plus

C - SERIES NUMBER

S1 — Series 1

D - PRODUCT FINISH

S — Silver

E - LED COLOR

GY* — Golden Yellow
Y* — Yellow
LG* — Light Green
IB* — Ice Blue
TQ* — Turquoise
C* — Cyan
V* — Violet
P* — Pink

* Available only in HOP

F - LENGTH

1 — 1FT
4 — 4FT

G - OPTIC

6 — 6° x 6°
10 — 10° x 10°
25 — 25° x 25°
40 — 40° x 40°
140 — 10° x 40°
360 — 30° x 60°
365 — Forward Throw Asymmetric
310* — 30° x 100°

* Available only in HOP

ACCESSORIES	DESCRIPTION	ORDERING SKU
Leader Cable US 3 Pin 10FT	Power to first fixture of run	MLCI-US-3PIN-G-10FT
Leader Cable US 3 Pin 25FT	Power to first fixture of run	MLCI-US-3PIN-G-25FT
Jumper Cable US 3 Pin 1FT	Connection between fixtures	MJCI-US-3PIN-G-1FT
Jumper Cable US 3 Pin 4FT	Connection between fixtures	MJCI-US-3PIN-G-4FT
Terminator 3 Pin	Must be fixed to last fixture for safety	MTI-3PIN-G
Interior Bracket Lock	Holds fixture in place for vertical installation	MCGI-BL-G

CONTROLS	DESCRIPTION	PART NUMBER	ORDERING SKU
MODA Bridge 1 2.0 US	Allows user to convert a 0-10V dimming signal into an ELV dimming signal. North American Model	MODA-BRIDGE-1-S2-S	250-0000