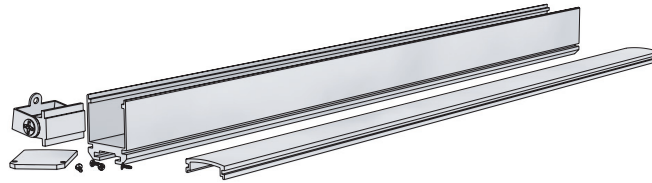


- 1 This product must be installed in accordance with the applicable installation code, by a person familiar with the construction and operation of the product and the hazards involved. Ensure power is off before installation, verify electrical plan first, read all installation instructions before beginning installation. With the constant development of our products please check our website (www.modalight.com) for any possible changes to the installation of this product.

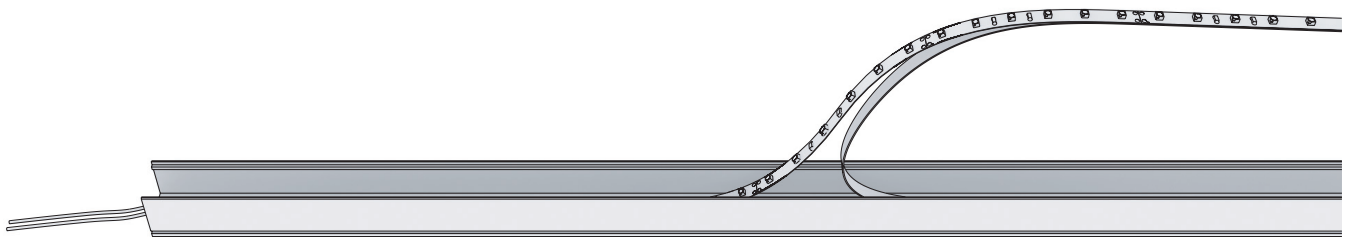
Este producto debe ser instalado de acuerdo con el código de instalación por una persona familiarizada con la construcción y operación del producto y los riesgos que entraña. Asegúrese que la electricidad este apagada antes de la instalación, verifique plan electrico, lea todas las instrucciones de instalación antes de comenzar instalación. Con el desarrollo constante de nuestros productos, visite nuestro website (www.modalight.com) para todos posibles cambios en la instalación de este producto.

Ce produit doit être installé en conformité avec le code d'installation applicable, par une personne familière avec la construction et l'exploitation du produit et les risques encourus. Assurer que l'alimentation est coupée avant l'installation, vérifiez le plan électrique d'abord, lire toutes les instructions d'installation avant de commencer installation. Avec le développement constant de nos produits s'il vous plaît consulter notre site web (www.modalight.com) pour toutes les modifications possibles à l'installation de ce produit.

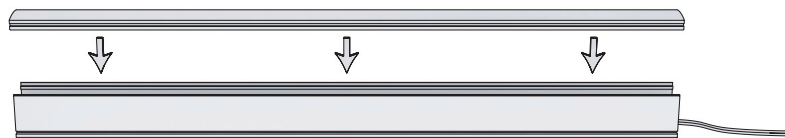
- 2 Insure all parts necessary are present for installation.



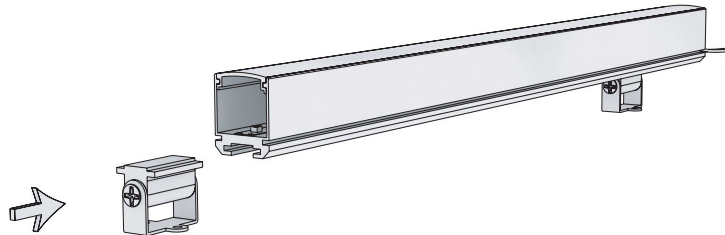
- 3 Install Moda Flexible Linear product. See BOW spec sheet for compatible product.



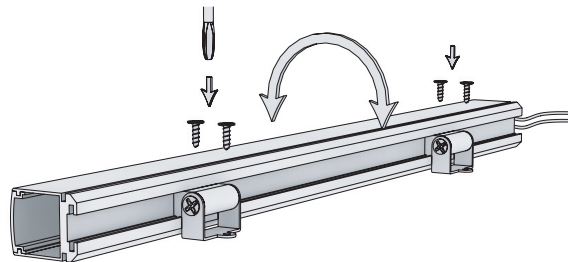
- 4 Slide mounting bracket into BOW XTRUSION base.



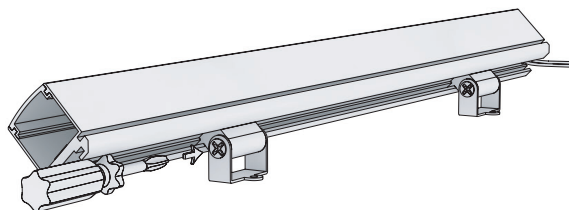
- 5 Slide mounting bracket into BOW XTRUSION channel.



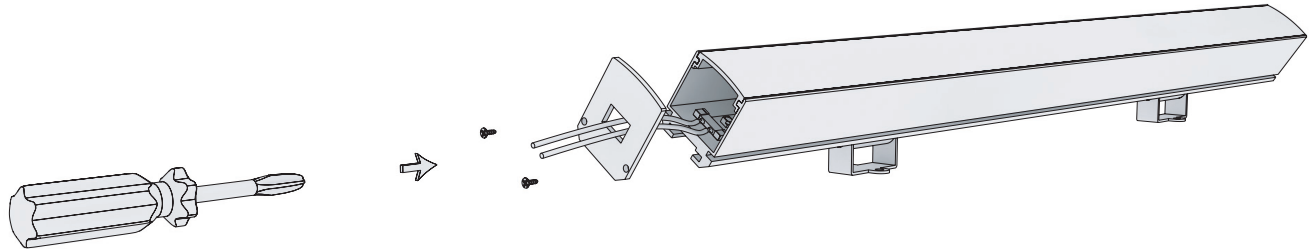
- 6 Rotate BOW XTRUSION and use all predrilled mounting spots to ensure optimal stability.



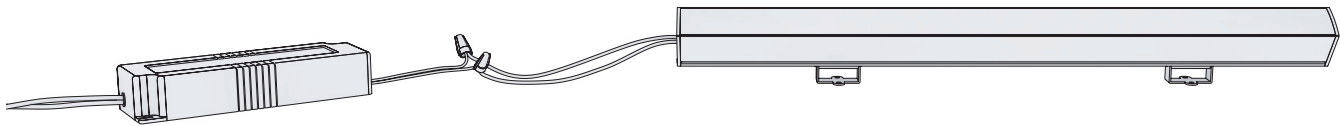
- 7 Tighten screw to lock BOW XTRUSION into desired angle



8 Screw end cap onto BOW XTRUSION.



9 Connect to MODA LIGHT driver. ENSURE POWER IS OFF!

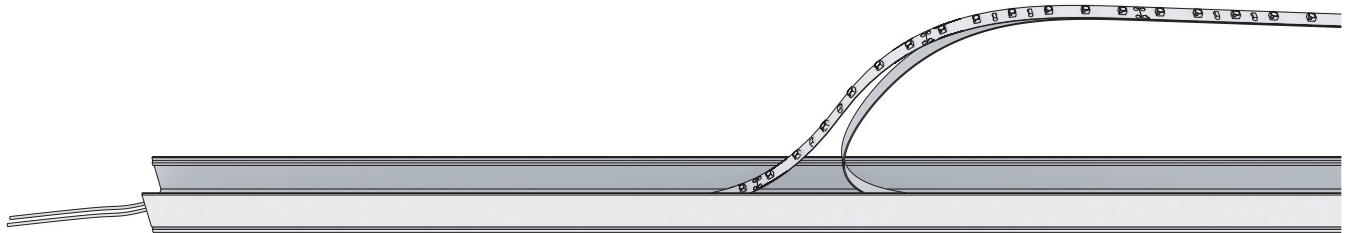


10 Drill pilot hole into base of BOW XTRUSION to pass flexible linear leads through.

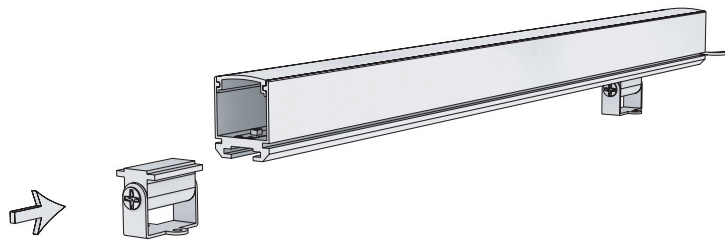


Optional Installation

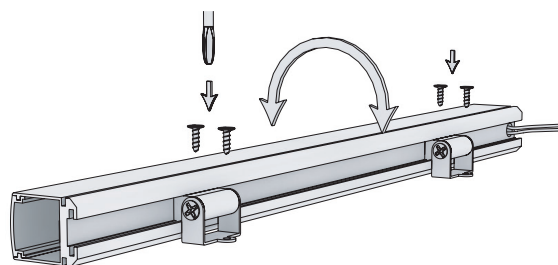
- 11 Install MODA Flexible Linear product. See BOW specsheet for compatible product.



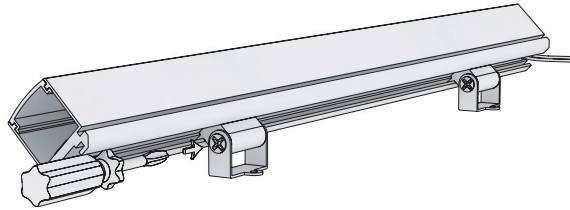
- 12 Slide mounting bracket into BOW XTRUSION channel.



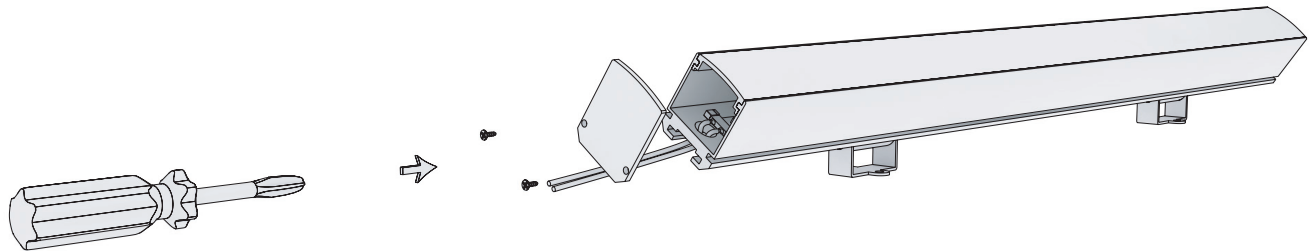
- 13 Rotate BOW XTRUSION and use all predrilled mounting spots to ensure optimal stability.



14 Tighten screws to lock BOW XTRUSION into desired angle.



15 Screw end cap onto BOW XTRUSION.



16 Connect to MODA Light driver. ENSURE POWER IS OFF!

